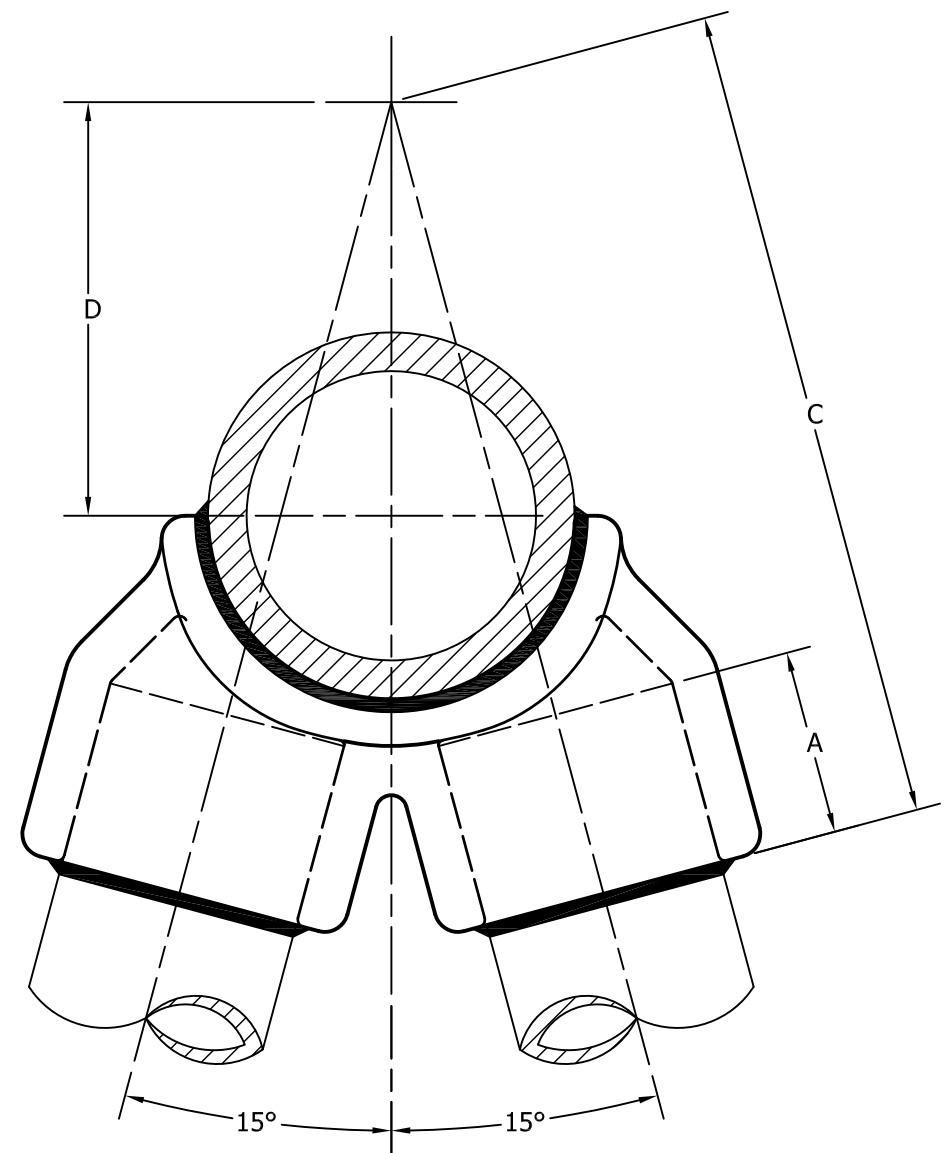
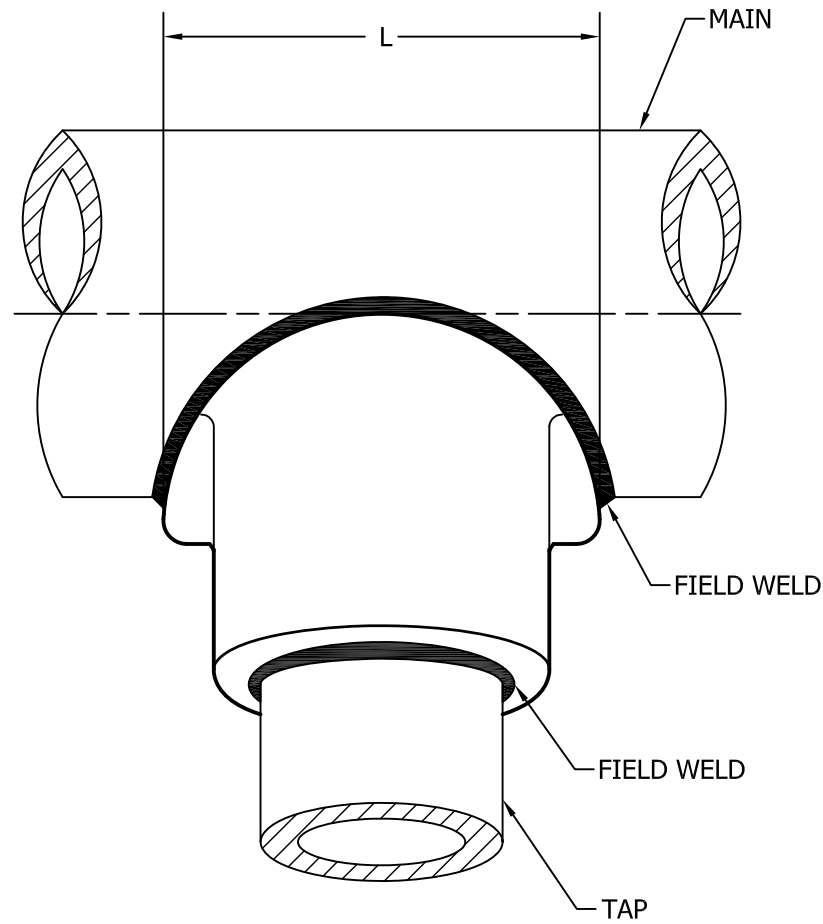


CATALOG NUMBER	CONDUCTOR SIZE IPS		DIMENSIONS IN INCHES			
	MAIN	TAP	A	C	L	D
WTT2-15-1010	1	1	1	3 11/16	3 1/8	2 11/16
WTT2-15-1210	1 1/4	1	1	4 15/16	3	2 13/16
WTT2-15-1410	1 1/2	1	1	4 15/16	3	2 11/16
WTT2-15-1412	1 1/2	1 1/4	1	5 11/16	3 1/2	3 7/16
WTT2-15-1414	1 1/2	1 1/2	1 1/2	6 1/2	3 3/4	3 3/4
WTT2-15-2010	2	1	1 5/16	5 5/16	3 1/16	2 1/2
WTT2-15-2012	2	1 1/4	1 1/2	6 3/16	3 1/4	3 3/16
WTT2-15-2014	2	1 1/2	1 1/2	6 9/16	3 1/2	3 9/16
WTT2-15-2020	2	2	1 1/2	7 5/16	4	4 3/8
WTT2-15-2410	2 1/2	1	1	5	3 1/4	2 3/16
WTT2-15-2412	2 1/2	1 1/4	1 1/2	6 3/16	3 1/4	2 15/16
WTT2-15-2414	2 1/2	1 1/2	1 1/2	6 9/16	3 1/2	3 5/16
WTT2-15-2420	2 1/2	2	1 3/4	7 3/4	4	4 5/16
WTT2-15-2424	2 1/2	2 1/2	2	8 7/8	4 1/2	5 3/16
WTT2-15-3010	3	1	1 1/4	9 7/8	4	2 1/2
WTT2-15-3012	3	1 1/4	1 1/2	6 1/4	3 1/4	2 5/8
WTT2-15-3014	3	1 1/2	1 1/2	6 1/6	3 1/2	2 7/16
WTT2-15-3020	3	2	1 3/4	7 3/4	4	3 7/8
WTT2-15-3024	3	2 1/2	2	8 15/16	4 3/8	4 7/8
WTT2-15-3030	3	3	1 3/4	10	5 1/2	6 1/4



NOTES:

1. MATERIAL: 356-T6 ALUMINUM ALLOY.
2. THESE FITTINGS ARE SUITABLE FOR EHV USE ON CONDUCTORS THAT HAVE DEMONSTRATED CORONA FREE PERFORMANCE AT THE DESIRED VOLTAGE LEVELS.

70093	06/13/2017	VV	DR
EC #	DATE	CHG BY	RESP ENG
DESC OF DWG: REDRAWN IN AUTOCAD			
REASON (S) FOR CHANGE: DISPOSITION OF MAT'L:			

HPS®

CONFIDENTIAL: THIS DRAWING AND ITS CONTENTS ARE CONFIDENTIAL AND THE EXCLUSIVE PROPERTY OF HUBBELL POWER SYSTEMS. NO PUBLICATION, DISTRIBUTION OR COPIES MAY BE MADE WITHOUT THE WRITTEN CONSENT OF HUBBELL POWER SYSTEMS. HUBBELL POWER SYSTEMS UNPUBLISHED ALL RIGHTS RESERVED UNDER THE COPYRIGHT LAWS

HUBBELL® POWER SYSTEMS
POWER SYSTEMS, INC.

TITLE **WELDED ALUMINUM TEE CONNECTOR (15 DEG VEE TAP)**

SIZE B	DWG NO. C-1203	CAT / PART / ASSY NO. WTT2-15	REV 28
DO NOT SCALE THIS DRAWING		DRN BY WDG	DATE 08/21/57 SHEET 1 OF 2

CATALOG NUMBER	CONDUCTOR SIZE IPS		DIMENSIONS IN INCHES			
	MAIN	TAP	A	C	L	D
WTT2-15-3412	3 1/2	1 1/4	1	5 13/16	3	2 7/16
WTT2-15-3414	3 1/2	1 1/2	1 1/2	6 9/16	3 1/2	2 11/16
WTT2-15-3420	3 1/2	2	1 3/4	7 3/4	4	3 5/8
WTT2-15-3424	3 1/2	2 1/2	2	9 3/16	4 3/8	4 3/4
WTT2-15-3430	3 1/2	3	1 3/4	10	6	6
WTT2-15-3434	3 1/2	3 1/2	2 1/2	11 11/16	6	7
WTT2-15-4010	4	1	1	5 1/16	3 1/2	1 7/16
WTT2-15-4012	4	1 1/4	1 1/2	6 3/4	4 1/2	2 11/16
WTT2-15-4014	4	1 1/2	1 1/2	6 1/2	4 3/8	2 3/8
WTT2-15-4020	4	2	2	8	4 3/8	3 3/8
WTT2-15-4024	4	2 1/2	2	8 15/16	4 3/8	4 3/8
WTT2-15-4030	4	3	3	11 1/4	5 1/8	5 11/16
WTT2-15-4034	4	3 1/2	2	11 3/16	6	6 11/16
WTT2-15-4040	4	4	2 3/8	11 1/8	5 7/16	6 1/4
WTT2-15-4430	4 1/2	3	2	10 3/8	5	5 1/2
WTT2-15-4434	4 1/2	3 1/2	2	11 1/4	6	6 1/2
WTT2-15-5020	5	2	1 3/4	8 1/16	5 1/8	3 1/8
WTT2-15-5024	5	2 1/2	2	8 7/8	4 3/8	3 3/4
WTT2-15-5030	5	3	2 1/2	10 15/16	5 1/8	5 5/16
WTT2-15-5034	5	3 1/2	2 1/2	11 7/8	6 1/8	6 5/16
WTT2-15-5040	5	4	2 1/4	12 7/16	6 1/2	7 1/8
WTT2-15-5050	5	5	2	14 3/8	7 1/2	9 3/8

CATALOG NUMBER	CONDUCTOR SIZE IPS		DIMENSIONS IN INCHES			
	MAIN	TAP	A	C	L	D
WTT2-15-6020	6	2	1 1/4	7 5/16	5	2 5/16
WTT2-15-6024	6	2 1/2	1 1/2	8 7/16	5	3 3/16
WTT2-15-6030	6	3	2 1/2	10 15/16	5 1/8	4 3/4
WTT2-15-6040	6	4	2 1/2	12 11/16	6 1/8	6 9/16
WTT2-15-6050	6	5	2 3/4	15 1/16	7 3/4	8 3/4
WTT2-15-6060	6	6	2 1/2	16 7/8	7 1/4	10 15/16
WTT2-15-80D-60	8 O.D.	6	2 1/2	17	8 3/4	10 3/16

70093	06/13/2017	VV	DR
EC #	DATE	CHG BY	RESP ENG
DESC OF DWG: REDRAWN IN AUTOCAD			
REASON (S) FOR CHANGE: DISPOSITION OF MAT'L:			

HPS®

CONFIDENTIAL: THIS DRAWING AND ITS CONTENTS ARE CONFIDENTIAL AND THE EXCLUSIVE PROPERTY OF HUBBELL POWER SYSTEMS. NO PUBLICATION, DISTRIBUTION OR COPIES MAY BE MADE WITHOUT THE WRITTEN CONSENT OF HUBBELL POWER SYSTEMS. HUBBELL POWER SYSTEMS UNPUBLISHED ALL RIGHTS RESERVED UNDER THE COPYRIGHT LAWS

 HUBBELL® POWER SYSTEMS			
TITLE WELDED ALUMINUM TEE CONNECTOR (15 DEG VEE TAP)			
SIZE B	DWG NO. C-1203	CAT / PART / ASSY NO. WTT2-15	REV 28
DO NOT SCALE THIS DRAWING		DRN BY WDG	DATE 08/21/57 SHEET 2 OF 2